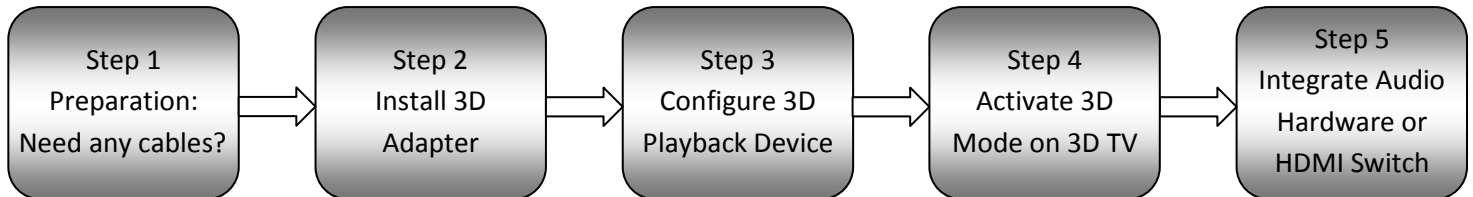




Adapter Installation Guide For Samsung 3D DLP

Need help? Contact: support@tru3d.com

Installation Overview:



STEP 1: Preparation – Make sure you have all the cables that you need.

- ✓ The 3D Adapter KIT includes a single HDMI 1.3a (high speed) cable to connect the adapter to your Samsung 3D DLP HDTV.
- ✓ You may need to purchase additional cables depending upon your number of 3D sources, audio hardware, etc. Many HDMI 1.3a devices do not actually interfere with the Adapter.
- ✓ Below are your various audio options that are possible in addition to using HDMI 1.4 audio amplifiers and switches. Please make sure you have everything you need to begin installation.

Audio Option 1: Samsung 3D DLP HDTV built-in Front Speakers *

- A. To use Audio over HDMI with most recent Samsung 3D DLP HDTV models:
 - 1x HDMI 1.3 Cable to connect your 3D Source to the Adapter Input.
- B. To use Auxiliary Stereo Input if your Samsung 3D DLP only supports Auxiliary sound while in 3D mode:
 - a. For the Sony Playstation 3:
 - 1x Sony PS3 Component + 2 channel audio cable OR S-Video + 2 channel audio cable
 - b. For other 3D Sources with 2-channel audio output:
 - 1x Standard 2-Channel RCA stereo connector cable for each 3D Source

Audio Option 2: Audio Amplifier with 2-channel stereo input

- A. For the Sony Playstation 3:
 - 1x Sony PS3 Component + 2 channel audio cable OR PS3 S-Video + 2 channel audio cable
- B. For other 3D Sources with 2-channel audio output:
 - 1x Standard 2-Channel RCA stereo connector cable for each 3D Source

Audio Option 3: Audio Amplifier with optical audio input

- To connect optical audio to your amplifier, you will need:
 - 1x HDMI Cable AND 1x Optical Cable for each 3D Source

Audio Option 4: HDMI 1.3a Switch or HDMI 1.3a Switching Audio Receiver**

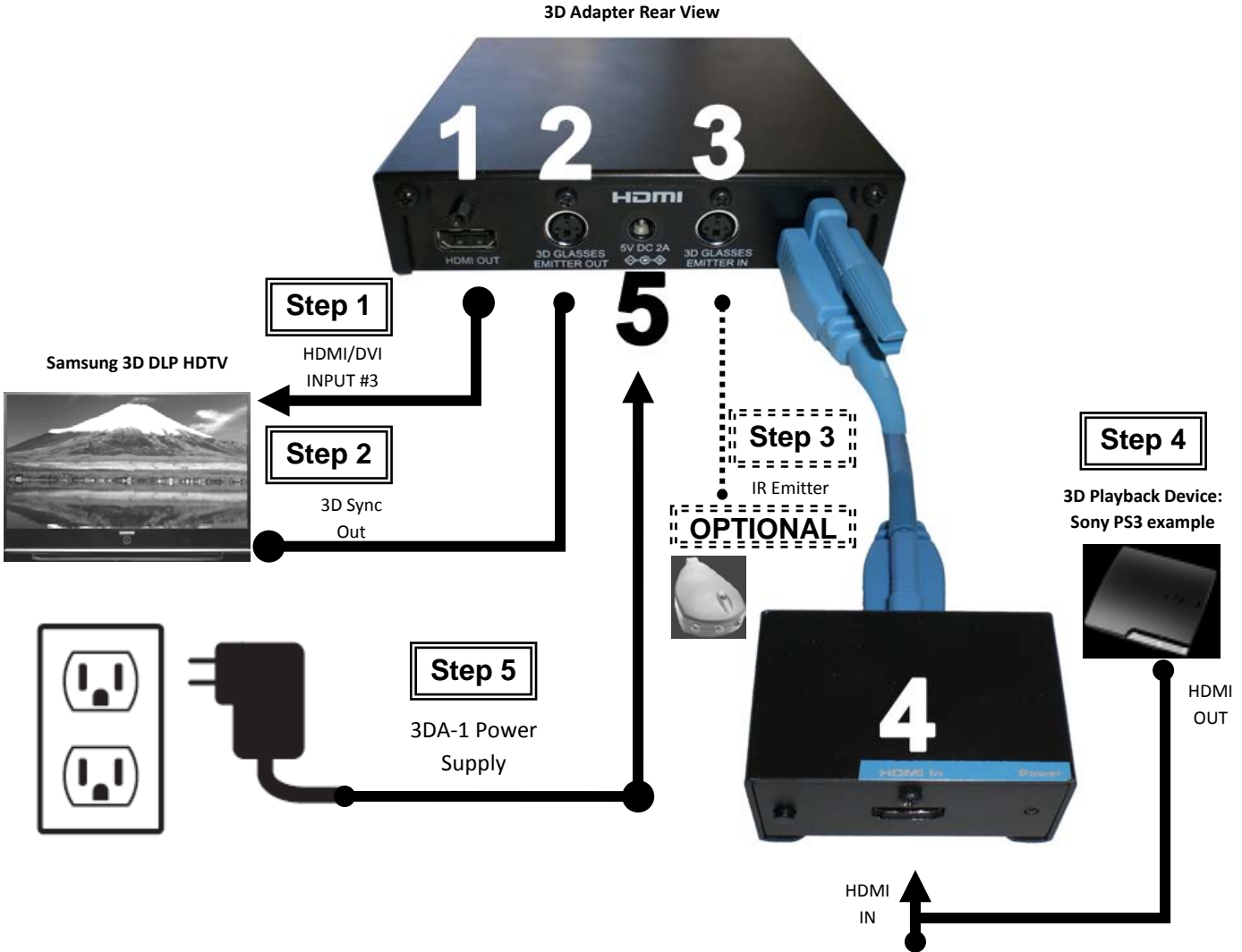
- To connect multiple 3D sources to the 3D adapter via HDMI 1.3a input switching hardware you will need:
 1. 1x HDMI 1.3a cable for each 3D source device (3 separate 3D sources will require 3 cables)
 2. 1x HDMI 1.3a cable to connect the HDMI 1.3a switch output to the 3D Adapter.



TRU3D 3D TV Adapter KIT for Samsung 3D Ready DLP HDTV

STEP 2: Install 3D Adapter

- TURN OFF all devices! Do not turn them back on until indicated.



Updated Connection Order for Samsung 3D DLP HDTV:

1. Connect Mitsubishi 3DA-1 HDMI OUT → Samsung 3D DLP HDMI Input #3 (Do not use other inputs)
2. Connect Samsung 3D Sync OUT → Mitsubishi 3DA-1 3D Emitter IN
3. OPTIONAL: Connect IR Emitter → Mitsubishi 3DA-1 3D Emitter OUT (For IR Emitter based glasses only)
4. Connect 3D Playback Device HDMI OUT → 3D Adapter HDMI IN (use input on smaller black box)
5. Connect Mitsubishi 3DA-1 Power Supply
6. Turn ON Samsung 3D DLP HDTV and Select HDMI Input #3
7. Turn ON 3D Playback Device and Proceed to Step 3.



STEP 3: Configure 3D Mode on each 3D Playback Source.

For Playstation 3 3D Mode Setup

1. **Connect your Playstation 3 directly to the adapter as shown in Step 2.**
2. Update the Playstation 3 to the latest Firmware 3.50 or newer:
 1. Turn on your PS3 and make sure the internet is connected to it.
 2. From the Home Menu, go to Settings -> System Update
 3. Select Update 'via Internet'
 4. Reboot after update completed
1. Power ON the Playstation 3, if a 3DTV is found at startup, skip to step 5.
 1. Go into display settings
 2. Select Automatic
 3. Select Yes to 1080p
 4. Select the Screen Size nearest to the customers **3D DLP THAT YOU HAVE AT HOME**, not the size of the 3D TV that you are using to activate the PS3.
 5. On the next screen, you will now see 720p(3D) and 1080p (3D) modes listed at the bottom
 6. Save Settings
 7. Configure your audio output options according to your audio hardware requirements
 8. Save Settings
2. Playstation 3 3D Mode Configuration Complete.

For Cable-Box (DirecTV) 3D Mode Setup:

1. **Connect your (DirecTV) cable-box directly to the Adapter as shown in Step 2.**
2. Turn on your (DirecTV) cable-box.
3. Tune to a standard 2D or HD channel.
4. Use your (DirecTV) cable-box remote and go into settings-> HDMI settings.
5. Make sure only 1080p is checked for the best viewing quality and also set Native to off.
6. **Reset the (DirecTV) cable-box.**
7. It may take a minute or two, be patient for it to fully boot.
8. **After the (DirecTV) cable-box has fully booted, tune to channel 103 or other (DirecTV) 3D channel.**
9. You may initially get an error message at this stage; it takes time (5-10 minutes sometimes) for the (DirecTV) Cable box to see that a 3D TV is connected.
10. Leave your (DirecTV) cable-box powered on and on the 3D Channel until your box refreshes and a 3D side-by-side picture appears
11. If the side-by-side 3D picture does not appear, Call (DirecTV) cable service provider and have your 3D Service refresh signal sent, then follow their phone based support instructions to verify viewing 3D channels, 3D on-Demand, 3D pay-per-view, etc. If you encounter difficulties and your cable provider has verified your 3D services as active, then contact support@tru3d.com for trouble-shooting assistance.

Note: For specific 3D Cable TV Setup, follow the installation steps provided by your specific service provider and make sure that you have a cable box model and service option that supports 3D viewing and 3D channel line-up. We have provided the DirecTV 3D mode setup only as an example.

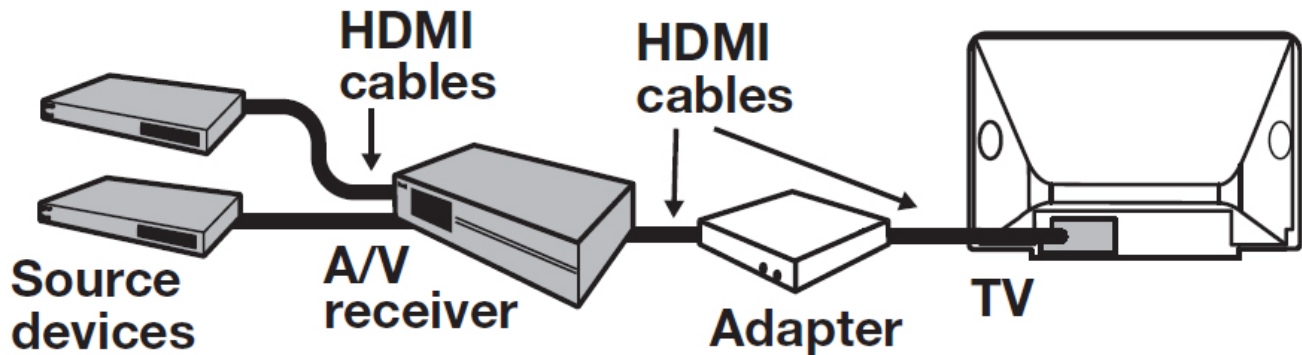


TRU3D 3D TV Adapter KIT for Samsung 3D Ready DLP HDTV

STEP 4: Activate 3D Mode on TV (first time configuration)

1. Turn ON the Samsung HDTV
2. With Samsung Remote got MENU edit the label of HDMI Input #3 and re-name it to 'PC'
3. The Mitsubishi 3DA-1 should automatically turn on within a few seconds, if not MANUALLY power on your Mitsubishi 3DA-1 adapter.
4. Mitsubishi 3DA-1 light should be GREEN
5. Gefen light should be GREEN
6. Turn ON your Audio Amplifier if you have integrated one.
7. Turn ON the PS3
8. With Samsung remote use 3D mode button OR in the MENU turn ON 3D MODE
9. OPTIONAL X102 GLASSES: With Samsung remote go to MENU Select Mode 2 (INVERTED/INV-ON)

STEP 5: Connect multiple 3D Sources using an Audio Receiver or HDMI Switch:



Mitsubishi 3DA-1 Operational Mode Notes:

Do NOT manually power off the Mitsubishi 3DA-1 Adapter during operation or you may have to reset your 3D playback device before continuing 3D viewing.

- **For the Sony Playstation 3:**
Default (Auto-Normal) should be used for your PS3. This mode is for HDMI 1.4 compliant playback devices with auto 3D format detection. Normal mode is also proper for 2D content pass-through and 3D DLP Checkerboard content pass-through.
- **For Most 3D enabled Cable Boxes:**
L-R Side-by Side or Above Below mode must be manually selected using the 3D mode button on the Mitsubishi 3DA-1 for certain programming. You must use the 3D mode button to select the 3D mode after tuning to the 3D channel, then you must select Normal mode to return to viewing of a 2D channel.

*Certain Samsung 3D-Ready DLP HDTV models have limited audio compatibility while operating in 3D. The adapter kit allows for both 2-channel and 6-channel audio pass-through. You may have to set your 3D source device to only output 2-channel audio over HDMI to prevent malfunction of your Samsung 3D DLP HDTV speakers.

** 'High-End' HDMI 1.3a Switching Audio Amplifiers may interfere with the 3D signal and may not work as an HDMI 1.3a pass-through switch. HDMI 1.3a devices and switches do not officially support 3D and results may vary. TRU3D offers HDMI 1.3a solutions with NO guarantee of integration results with your specific hardware. There are hundreds of thousands of possible configurations. We have tested the base-line system configurations and gathered consumer results to make the above recommendations. If your HDMI 1.3a switch is not compatible, it may disable 3D support until it is removed from the connection loop.